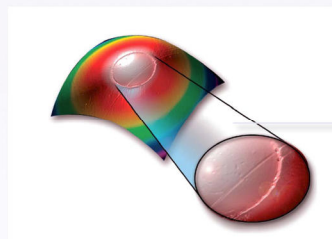
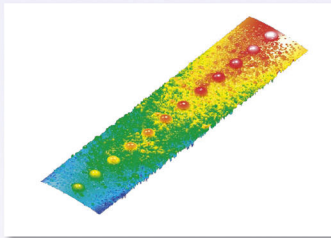


Sylex s.r.o.

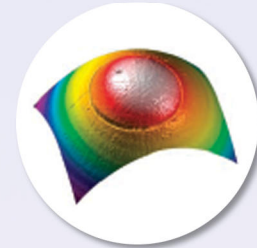


Sylex s.r.o. offers services in the field of geometry measurements of single-fiber and multi-fiber connectors according to IEC and Telcordia by measurement systems DAISI and DAISI-MT from DATA-PIXEL.

DAISI

Digital Automated Interferometer for Surface Inspection

DAISI is the only interferometer really designed for the use in the production environment. DAISI was designed with many automation features and a sophisticated interface to the microcontroller-based electronic interface of the system.



- Non-contact measurement
- Servo-controlled reference mirror for automatic Apex calibration
- Strongest ferrule holder in the industry with automated open/close feature. Can perform measurements while handling the cable
- No exterior moving parts or adjustment screw -> No apex decalibration
- Vibration insensitive. Measurements can be made when holding the system by hand
- Connector key adaptors for most connector types.
- Fast and automated measurement of radius, apex offset, fiber height + more
- Accurate and repeatable measurements
- Interfaceable to laptop computers, only one USB2.0 link required
- Compliance with Industry Standards for Interferometer Measurements
- Measure angle of cleaving of bare fibers with great precision
- High resolution 2D & 3D surface profiles
- Measurement Report and History Report in Excel
- Measure Fiber and Ferrule Roughness (Sq parameter)

Dedicated to the measurement of end-face geometry for Single-Fiber connectors.

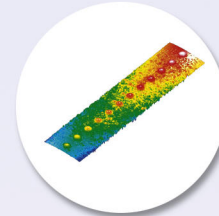
Designed for use in production and field applications.

Parameter	Repeatability/Reproducibility	Range
Radius (mm)	±0.1% / ±0.2%	3 to flat
Apex Offset (µm)	±0.5 / ±1	0 to 500
Fibre Height (nm)	±1 / ±1.5	±160 (±20000 in WL mode)
Fiber Cleave Angle (°)	±0.05°/±0.03°	0 to 12°
Measurement Speed (sec.)		2
Magnification		x300
Wavelength (nm)		633
Power requirements		12V 25VA

DAISI-MT

Digital Automated Interferometer for Surface Inspection of MultiFiber ferrules

DAISI-MT is White-Light interferometer, dedicated to the measurement of endface geometry of multifiber ferrules. Measuring end-face geometry on MT-RJ connectors, equipped with a revolutionary "no-exterior-movingparts" mechanical design.



- Single unit for measurement of most types of MultiFiber ferrules (MT-X, MPO, Mini-MT (MT-RJ), etc.) PC and APC
- White-Light interferometer
- Vibration insensitive
- Closed-loop high precision 30 microns Z scanning range
- Non-contact measurement
- Servo-controlled reference mirror for automatic Apex calibration
- No exterior moving parts or adjustment screw -> No apex decalibration
- Fast and automated measurement of endface parameters
- Accurate and repeatable measurements
- Compliance with Industry Standards for Interferometer Measurements
- High resolution 2D & 3D surface profiles
- Measurement Report and History Report in Exce

DAISI-MT system is based on a 30 microns stroke closed-loop piezoelectric transducer, the focus is smoothly, precisely and quickly scanned across the sample surface in less than 10 seconds.

Parameter	Repeatability/Reproducibility	Range
Radius (mm)	0.5% / 0.5%	3 to flat
X & Y angles (°)	0.002 / 0.01	±1° deviation from 0°(PC) or 8°(APC)
Fibre Height (um)	0.01 / 0.01	up to 20
Measurement Speed (sec.)		13 (sec. for a 12 fibers ferrule)
AutoFocus speed (sec.)		10
Field of View (mm)		configurable 3.2 x 2.5 max.
Lateral Resolution (um)		configurable 2.5 max.
Wavelength (nm)		White LED