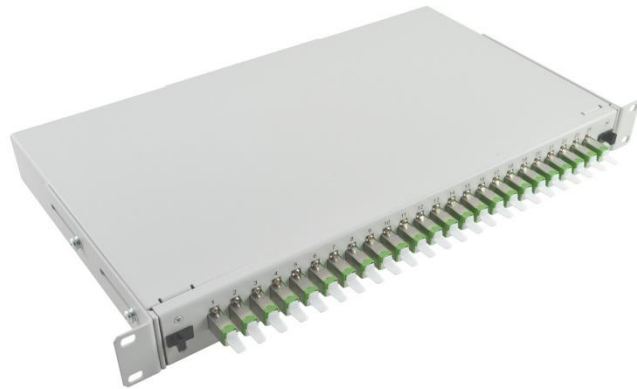


## E2000 patch panel – fully loaded

### Basic characteristics

- ▲ Width 19"
- ▲ Height 1U
- ▲ Space for 2 back plates ready for Duralino fanout® fixation
- ▲ Available also in 2U version
- ▲ Fully loaded with pigtails



### Benefits

- ▲ Exchangeable front panels and back plates
- ▲ Adjustable depth of position in rack
- ▲ 12/24x E2000 simplex adapters

### Applications

- ▲ Telecom/Datacom
- ▲ LAN/WAN Networks

---

### Temperature range

Indoor controlled environment (-10°C /+60°C)

---

### Parameters

Dimensions	482 x 251x 44 mm (1U)	
Material	powdered coating steel	
Colour	light gray RAL7035 deep black RAL9005	
Capacity	up to 24 fibers	
Cable entry ports	grommet/gland	2x PG13,5/M20 or 4x PG7/M12
	Duralino® fanout	2xDuralino fanout® size XL/L or 4xDuralino fanout® size S
Insertion Loss (acc. IEC 61300-3-4 method B)	<0,25dB (@ 1310/1550nm) <0,25dB (@ 850/1300nm)	
Return Loss (acc. IEC 61300-3-6)	>50dB(UPC) / >60dB(APC) (@ 1310/1550nm) >30dB (@850/1300nm)	

---

### Identification

Label with unique serial number.

---

### Packaging

Each patch panel in cardboard box, bulk pack on palette.

\* Specifications are subject to change without notice

**For more information contact our sales team at [sales@sylex.sk](mailto:sales@sylex.sk)**