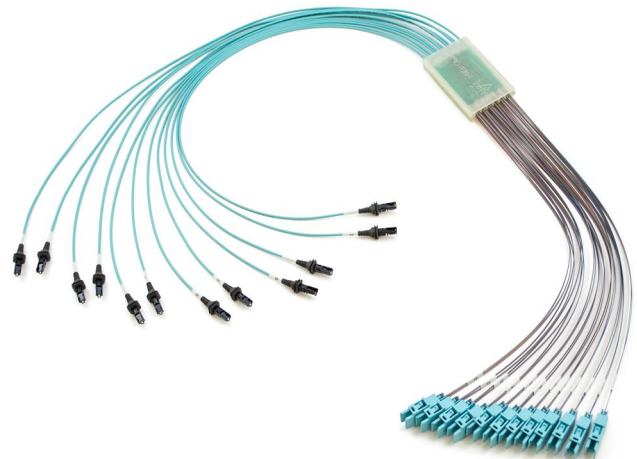


Stackable Shuffle Cross-Connect 144F

Basic characteristics

- ▲ Compact shuffle box size
- ▲ Possibility to stack multiple shuffles
- ▲ Hermaphroditic PRIZM MT ferule
- ▲ Debris insensitivity of MXC plug connector



Benefits

- ▲ High density parallel connector
- ▲ Debris insensitivity of MXC plug connector

Applications

- ▲ Supercomputing
- ▲ Data Networking
- ▲ SAN

Temperature range

Controlled environment (-10°C/+60°C)

Cable parameters

Jacket material	OFNG-LS
Cable construction	Bare ribbon
Outer diameter	approx. 2mm
Fiber count	144
Fiber type	MMF OM3

Connector parameters

	PRIZM LT	MXC
Compliance	US CONEC standard	US CONEC standard
Colour of housing	black	Aqua
Colour of boot	black	N/A
Polish	N/A	N/A
Insertion Loss (@850nm)	<3,7dB per channel	

Identification

Label with unique serial number.

Packaging

Each assembly in antistatic bag, bulk pack in cardboard box.

MXC, PRIZM MT, PRIZM LT and MTP is a registered trademark of US Conec, Ltd.
* Specifications are subject to change without notice

For more information contact our sales team at sales@sylex.sk