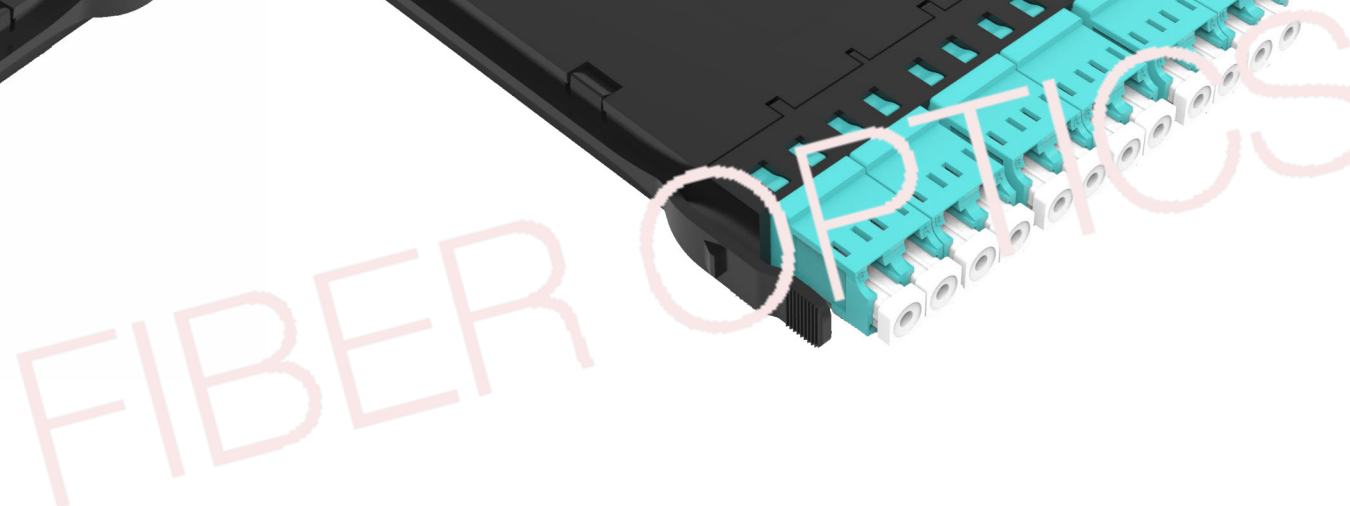
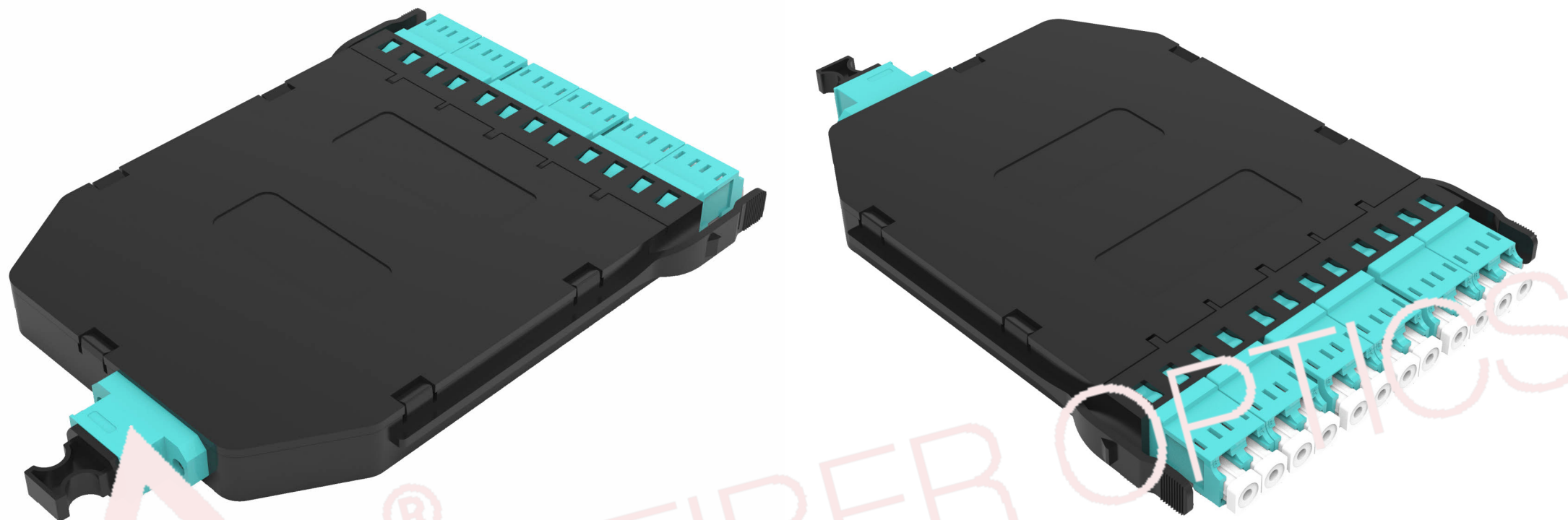


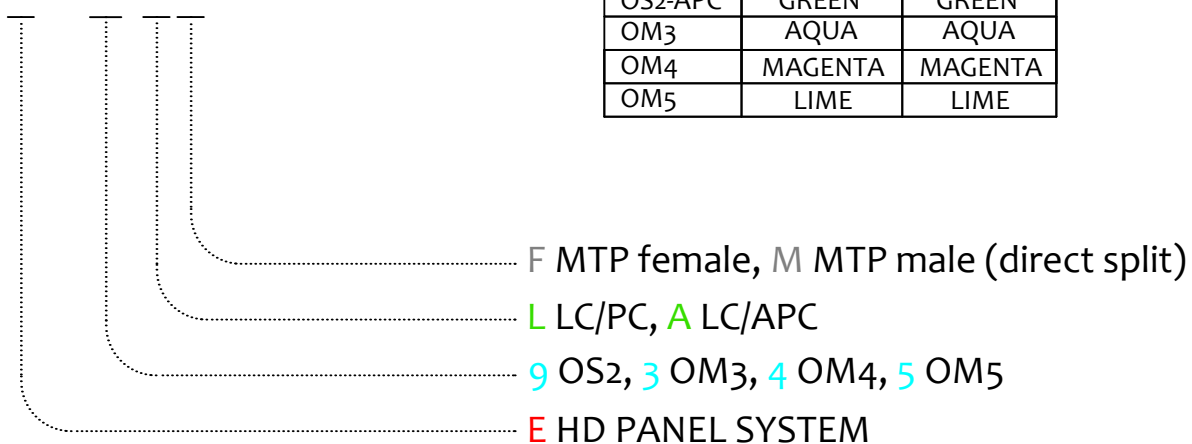
REAR VIEW

FRONT VIEW



ORDERING CODE

E12X-XX2-BLH



ADAPTERS COLOUR

MODE	MTP	LCD
OS2	GREEN	BLUE
OS2-APC	GREEN	GREEN
OM3	AQUA	AQUA
OM4	MAGENTA	MAGENTA
OM5	LIME	LIME

NOTES:

- 1 - OM3, OM4, OM5: IL<0.6dB AT 850nm AND 1300nm - CHANNEL VALUE ACCORDING IEC 61280-4-1 ONE-CORD REFERENCE METHOD  
RL>19.6dB AT 850nm AND 1300nm - CHANNEL GUARANTEED VALUE
- OS2: IL<0.6dB AT 1310nm AND 1550nm - CHANNEL VALUE ACCORDING IEC 61280-4-1 ONE-CORD REFERENCE METHOD  
RL>47B (UPC) AT 1310nm AND 1550nm - CHANNEL GUARANTEED VALUE  
RL>49.6B (APC) AT 1310nm AND 1550nm - CHANNEL GUARANTEED VALUE
- VISUAL ASPECT CHECK ACCORDING TO IEC 61300-3-35
- END FACE GEOMETRY ACCORDING TO TELCORDIA GR-326 (Singlefiber connector)
- END FACE GEOMETRY ACCORDING TO IEC 61755-3-31 (Multifiber connector)
- 2 - SYLEX-SX-O LABEL ON PRODUCT PACKAGING AND MASTER CARDBOARD BOX
- 3 - CUMULATIVE TEST REPORT OF MEASURED IL AND RL VALUES SENT ON DEMAND IN ELECTRONIC FORM

F MTP female, M MTP male (direct split)

L LC/PC, A LC/APC

9 OS2, 3 OM3, 4 OM4, 5 OM5

E HD PANEL SYSTEM

REVISION-DATE: A - 30.06.2021	CHANGE:	DRAWN BY, DATE: P.Gaspar 2021/06/30	TITLE: VERTEX		
NEW DRAWING		CHECKED BY, DATE: L.Miskerik 2021/06/30	1x12f MTP to 6xLC duplex module		
REVISION-DATE:	CHANGE:	APPROVED BY, DATE: Matus/Smelh. 2021/06/30	PRODUCT SPECIFICATION: -	DIMENSIONS IN MM UNLESS SPECIFIED	SCALE: NO SCALE
	CHANGE:	PRODUCT NUMBER: E12X-XX2-BLH	DRAWING NUMBER: 1-W-8539_1_A	SHEET NO. 1 of 1	
		A	THIS DRAWING CONTAINS INFORMATION THAT IS PROPRIETARY TO SYLEX s.r.o AND ANY USE WITHOUT PRIOR WRITTEN PERMISSION IS PROHIBITED		
				SIZE A3	