

October 2018

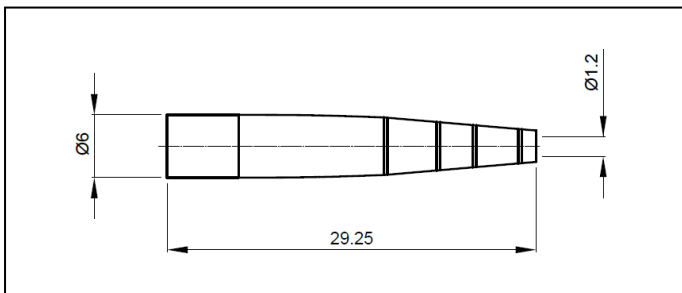
Dear Sir or Madam,

Please accept this document as a formal notification that SYLEX will be gradually replacing the current 900um long boot design for E2000 connectors in the complete range of assemblies where these connectors are used. This change is based on the decision of our connector supplier (Reichle & De-Massari), which coordinates the complete range of boots.

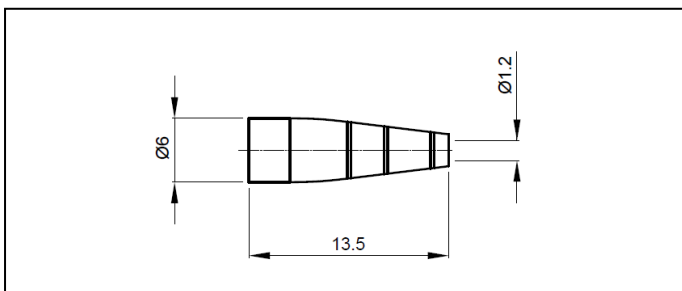
Below you will find a basic comparison of the current and new type of connector boot in terms of design and basic dimensions:

E2000 connector boot 900um

Current version



New version



For detailed information, please contact your primary SYLEX representative.

This change will be implemented through a gradual roll-out, coming into effect after stocks of current connector boots are depleted.

Sincerely,

Your SYLEX team

Release date: 4th of October, 2018 | **Version:** 00 | **Revision:** 00

SYLEX s.r.o. | Mlynské luhy 31 | 821 05 Bratislava | Slovak Republic | **Email:** sales@sylex.sk | **www.sylex.sk**